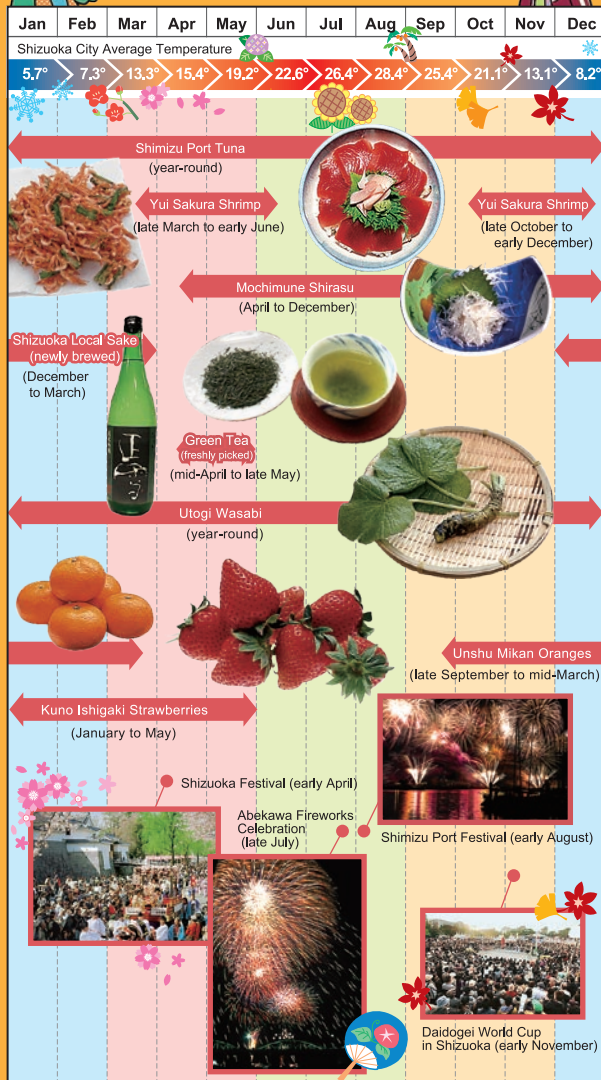


SHIZUOKA Seasonal Calendar



Publisher: Shizuoka City Planning/Editing/Production: The Shizuoka Shimbun @S
The information stated in this magazine is current as of July 31st, 2015. Stated information such as business hours, prices, and coupons, is subject to discontinuation or change. Please also be aware that we are unable to compensate for any loss due to information stated in this guide.

* The displayed prices generally include sales tax.

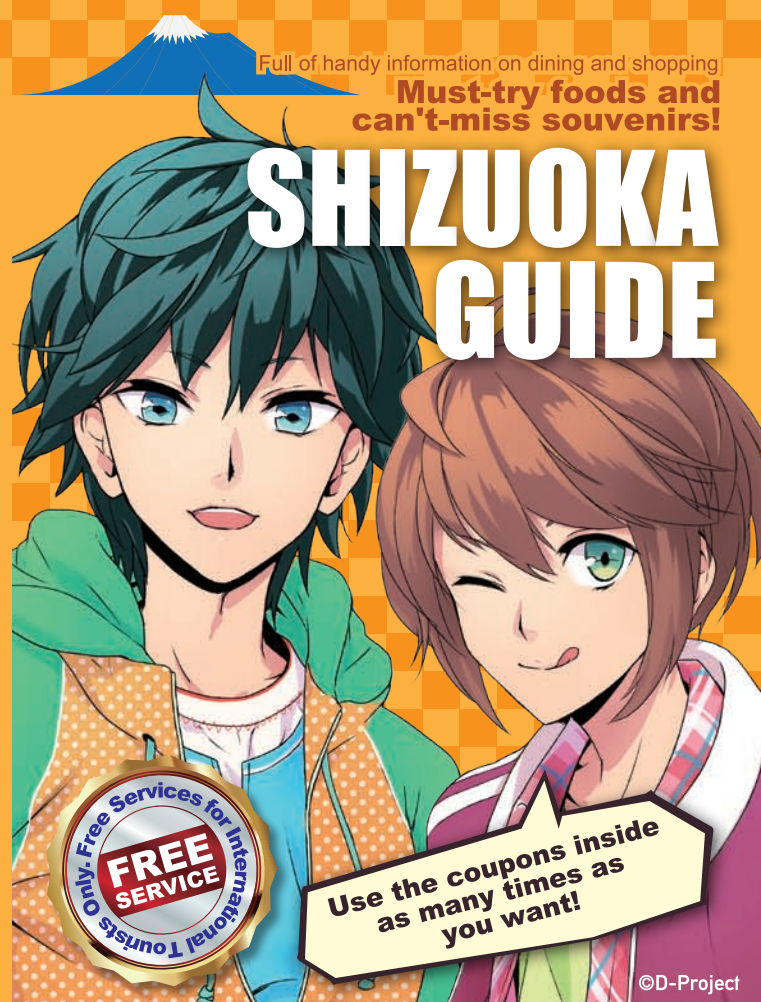
* Scheduled closures generally omit the New Year period, the Obon Festival, and Golden Week.

* Hours of operation generally listed in the format of the opening time to the closing time unless otherwise noted. Last order time is indicated by "L.O."

Full of handy information on dining and shopping

Must-try foods and can't-miss souvenirs!

SHIZUOKA GUIDE



Japan. Endless Discovery.



静岡市 Shizuoka City

静岡市

Welcome to Shizuoka

Shizuoka City is located near Mount Fuji, a World Heritage Site. Enjoy the seasonal scenery and fantastic views of "Fuji-san"!



You might see a reflection of Mt. Fuji in the river.



By JR Rail Line (Tokaido Shinkansen Hikari)

JR Tokyo Sta.	About 1 hr.	JR Shizuoka Sta.
JR Shin-Osaka Sta.	About 1 hr.	JR Nagoya Sta.
	About 1 hr.	



You can get a clear view of Mt. Fuji from the expressway!

Suruga Bay Ferry (About 65 minutes)



By Expressway (Tomei Expressway)

Tokyo	About 2 hrs.	Shimizu Interchange	About 10 min.	Shizuoka Interchange
Osaka	About 2 hrs. 20 min.	Nagoya	About 2 hrs.	



Buses are available from the airport to the station, too!

By Air

Mt. Fuji Shizuoka Airport	About 50 min. by car	JR Shizuoka Sta.
---------------------------	----------------------	------------------

How to Use Map Codes

Free to Use

You can view the locations of listed buildings and route instructions with Google Maps.

Use the barcode on the right, then enter the building's Map Code to search for it. Download maps right to your smartphone!



日本 食文化

The Culinary Culture of Shizuoka City

Shizuoka City's landscape has blessed it with a rich natural environment, spanning from the Southern Alps in the north to Japan's deepest bay, Suruga Bay, in the south. The pure water produced by the difference in elevation, unlike any other in the world, has created a wide variety of foods and a vibrant culinary Culture.

緑茶

Green tea



Shizuoka's green tea, said to be a favorite of the shogun Tokugawa Ieyasu, has a mild flavor and distinctive aroma. Shizuoka is home to many "tea masters" who blend teas from all over Japan to suit their customers' tastes.



まぐろ

Tuna



Shimizu Port boasts Japan's largest landings of bigeye tuna and yellowfin tuna. They are inexpensive and packed with healthy nutrients such as DHA and EPA, making them popular in local households.

The pure water here, combined with ancestral knowledge and techniques, has produced some of Japan's finest sake. Shizuoka's local sake, known for its clean and smooth taste, can be enjoyed with any meal or for any occasion.

Local sake

地酒





Listen to Japan's Culinary Professionals

Shizuoka Delicacies and How to Enjoy Them



Developed by order of Tokugawa Ieyasu, Shizuoka City became one of Japan's leading tea-producing areas. In addition to producing major domestic tea brands such as Honyamacha, it has also refined techniques for blending tea leaves. By identifying the characteristics of tea leaves, then heating and blending them, Japan's foremost tea master Fusao Maeda creates green tea with excellent flavor and aroma. When selecting teas, he advises, "Japanese people mainly drink sencha, but I recommend gyokuro if you really want to savor the flavor, or matcha if you want to enjoy a stronger flavor. You should consider the variety of tea, production area, grade, and roast when making your choice." Maeda also produces and sells sweets made with green tea, offering up a whole new world of tea.

Fragrant and flavorful Shizuoka green tea

Fusao Maeda
President and Tea Master
Maeda-Kinzaburo Shoten

茶町 KINZABURO 前田金三郎商店
Chamachi KINZABURO
Maeda-Kinzaburo Shoten

Chamachi Dori, 27 Dodayu-cho, Aoi-ku, Shizuoka City

MAP-1

054-252-2476

9:30 ~ 18:00,

Sun and Holidays 10:00 ~ 17:00

Wed Cash Only



A local specialty rich with choice tuna flavor

Yui Cannery Masayuki Hikosaka, President



In the area around Shimizu Port, which boasts the most tuna landings in Japan, canned tuna has been produced since the 1930s. Yui Cannery is an established producer that still carries on the techniques originated in Japan at that time. According to company president Masayuki Hikosaka, the secret behind the one-of-a-kind taste is that, "We use fatty, delicious albacore tuna (scientific name: *Thunnus alalunga*) which school near the Japan Sea from May through July. We use minimal flavoring like natural salt in order to make the most of the natural flavor of the tuna." Healthy oils are used, such as cottonseed and olive oil. The tuna is matured for six months until the oil is absorbed by the meat, producing a smooth flavor before shipping. Hikosaka recommends eating it, "all by itself, just as it is." The exceptional flavor of this canned tuna appeals to fans all over Japan.

由比缶詰所 Yui Kanzumesho
429-1 Yui, Shimizu-ku, Shizuoka City

MAP-2 P50

054-375-2121 8:00 ~ 17:00

Sat, Sun, Holidays

Cash Only

MAP-00...MAP Code

TEL Hours Closed on

Major credit cards accepted





Listen to Japan's Culinary Professionals



Clear, refreshing flavor born from renowned water

**Kanzawagawa Brewery
Masataka Mochizuki, President**



In the shadow of Mount Fuji, a World Heritage Site, and the Southern Alps, seven sake breweries take advantage of the plentiful water to make sake in Shizuoka City. Kanzawagawa Brewery's Masataka Mochizuki makes sake in Yui, where the traces of an Edo-period inn town along the old Tokaido road still survive. He describes Shizuoka's local sake as having a "clean and smooth taste." Shizuoka's local sake has led it to be called the "Ginjo Kingdom." The

clear taste produced by its water gives sake an excellent balance of flavor and aroma. He says, "Enjoying alcohol with your meal is a key part of Japanese culinary culture. Shizuoka's local sake is the perfect drink to have with your meal. Shizuoka has abundant seafood such as sakura shrimp (scientific name: *Lucenosergia lucens*) and wild game such as Suruga game fowl. I hope you will enjoy the marriage of our local sake with your meal."

神沢川酒造場 Kanzawagawa Shuzojo
181 Yui, Shimizu-ku, Shizuoka City

MAP-3 P50

☎ 054-375-2033 🕒 8:30 ~ 17:00

☑ Sun, Holidays

*Brewery tours available on request.

☑ Cash Only



Taste-testing the local sake is one of Shizuoka City's tourist attractions. Fugetsuro's Yosuke Haneda is one of Japan's few "honorary sake sommeliers." He works as a guide for local sake and has contributed to the proliferation and popularization of sake and Japanese culture. "Shizuoka's local sake has little acidity, which gives it a smooth, mellow flavor," he explains. He carefully selects sake to complement meals, and presents it in different containers depending on the variety. As for the basics of selecting sake, "I recommend daiginjo if you want to enjoy fruity flavors, and junmaishu if you are looking for a richer, bolder taste." Even within the same variety of local sake, there is the freshly-brewed flavor, the aged flavor, and some which are only available in certain seasons." So," he says, "I hope people will try the local sake in Shizuoka, where they can enjoy many seasonal foods."

浮月楼 浮殿 Fugetsuro Ukidono

11-1 Koya-machi, Aoi-ku, Shizuoka City

MAP-4 P47 C-5

☎ 054-252-0131

🕒 11:30 ~ 15:00 (L.O.14:00)

17:00 ~ 22:00 (L.O.21:00)

Sun 11:30 ~ 15:00 (L.O.14:00)

17:00 ~ 21:00 (L.O.20:00)

☑ Mon *Open afternoons only on holidays.

☑ VISA, DC, Master, AMEX, JCB, CUP



Enjoy flavors that change with the seasons

**Fugetsuro Ukidono
Yosuke Haneda, Manager / Honorary Sake Sommelier**



① Mount Fuji as seen from Miho-no-Matsubara

Miho-no-Matsubara has been depicted in ukiyo-e prints since long ago. It was registered as a component part of the Mount Fuji World Cultural Heritage Site.

MAP-5

Fantastic views of Mount Fuji from Shizuoka City



Panoramic view of Mount Fuji (Nippondaira Hotel)

This vast panoramic view of Mount Fuji was voted No. 1 in the "New Top 100 Sightseeing Spots of Japan".

MAP-8



Tea plantations and Mount Fuji (Nihondaira)

The relaxing green tea fields with Mount Fuji rising up behind is a magnificent view you truly cannot experience anywhere else.

MAP-9

Sakura shrimp drying in the sun with Mount Fuji

The fishing seasons for sakura shrimp, prized as the "jewel of the sea," are only in spring and autumn. The pink carpet of shrimp laid out to dry after a catch, with Mount Fuji in the background, is truly breathtaking.

MAP-6



Shimizu Port and Mount Fuji (Shimizu Marine Park)

At Shimizu Port, a port of call for passenger boats and an international trading port, you can enjoy the salty breeze while strolling along the water.

MAP-10

Autumn foliage and Mount Fuji (Satta Pass)

This spot is famous for being the only place depicted in "The Fifty-Three Stations of the Tokaido Road" by Utagawa Hiroshige, a master of Japan's ukiyo-e prints, where the original scenery still remains.

MAP-7

There are lots of places in Shizuoka City where you can see Mount Fuji!



RAMEN ラーメン

The Top 3 as Voted by Shizuoka Locals!

Presented by Shizuoka Shimbun @S



らーめん 矢吹 Ramen Yabuki

Tonkotsu broth comes in shoyu (soy sauce) and shio (salt) flavors! This shop offers a new style of tonkotsu ramen that turns tonkotsu ramen's reputation for heavy flavors on its head. (Yokubari Gyokai Tonkotsu Shoyu, ¥1050)

COUPON

Complimentary topping (¥100 menu items only). *Good for up to 6 people per group.

Sowaru Bldg 1F, 4-22 Koya-machi, Aoi-ku, Shizuoka City **MAP-11 P47 C-4**

☎ 054-255-3317

🕒 11:00 ~ 14:30 (L.O.) 17:00 ~ 25:30 (L.O.)

🌞 Sun, the 3rd Mon of the month

🍽 Japanese only 🏠 Cash only



Hamamura Village 1F, 2-3-1 Ryogae-cho, Aoi-ku, Shizuoka City **MAP-14 P47 B-4**

☎ 054-251-8777

🕒 11:00 ~ 28:00 (L.O.27:45) Sun11:00 ~ 24:00

🌞 Open every day 🍽 Japanese only

🏠 Cash only

らーめん ブッチャー 小鹿店

Ramen Butcher

A rich, satisfying ramen with fatty tonkotsu shoyu broth, lots of veggies, and hearty chashu pork. (Special Fuji Soba, ¥830)

COUPON

Fuji Soba or Zuke Soba for ¥500.



806-8 Oshika, Suruga-ku, Shizuoka City

MAP-13 P49 B-5

☎ 054-208-4457

🕒 11:00 ~ 14:30 (L.O.) 18:00 ~ 23:00 (L.O.)

*Closed once broth is sold out.

🌞 Open every day 🍽 Japanese only

🏠 Cash only



清六家 静岡両替町店

Seirock-ya

Open until 4 am. Enjoy smooth, rich tonkotsu broth. You can select the firmness of your noodles, the amount of oil used, and the intensity of the flavor. (Tokusei-roku Tonkotsu Shoyu Ramen, ¥930)

COUPON

Complimentary large-size serving of noodles, half bowl of rice, or ajitama marinated egg with an order of ramen (pick one item).



Restaurants recommended by Shizuoka Shimbun @S

豚骨屋 すぎ多 ス克蘭ブル店 Tonkotsuya Sugita

It looks thick and rich but tastes light! An authentic tonkotsu ramen shop whose owner is from Oita. You can specify the firmness of your noodles on a seven-point scale.

COUPON

Large ramen for the price of a medium ramen. *Good for up to 6 people per group.

SKT No. 2 Bldg 1F, 2-7-11 Ryogae-cho, Aoi-ku, Shizuoka City **MAP-12 P47 B-4**

☎ 054-663-3842

🕒 11:30 ~ 14:00 18:00 ~ 26:00 (Varies by the day of the week)

🌞 Mon 🍽 English 🏠 Cash only



伊駄天 静岡店 Idaten

Ramen prepared with homemade noodles, aromatic seafood, and broth made from domestic whole chicken. Choose either shoyu (soy sauce) or shio(salt) flavored broths.

COUPON

Complimentary half ajitama marinated egg with an order of Ramen.

Aiseido Bldg 1F, 7-5 Miyuki-cho, Aoi-ku, Shizuoka City **MAP-15 P48 C-4**

☎ 054-252-1130

🕒 11:00 ~ 14:30 17:30 ~ 22:30

Sun and holidays 11:00 ~ 21:00 (L.O.)

🌞 Open every day 🍽 Japanese only 🏠 Cash only



MAP-00... MAP Code **TEL** **Hours** **Closed on**

Menu languages available **Major credit cards accepted**

どぶり SHIZUOKA DONBURI 静岡

The Top 3 as Voted by Shizuoka Locals!

Presented by Shizuoka Shimbun @S



地魚専門店
井兵衛

Jizakana-senmonten Donbe

Shimizu Port is No. 1 in Japan for the volume of tuna landed. This restaurant is inside the Shimizu Fish Market at the port, and specializes in tuna. It also offers other menu items using uncommon fish. (Daily special 5-topping rice bowl, ¥12-1500)

COUPON

One complimentary alcoholic or soft drink. *Good for up to 3 people per group. *Only valid with purchase of meal.

Kashinoichi Magurokan 2F, 149 Shimazaki-cho, Shimizu-ku, Shizuoka City

MAP-16 P50 A-2

054-353-5544

10:00 ~ 22:00 (L.O. 21:00) Wed 10:00 ~ 17:00

Open every day

*Closed on Wed evenings.

Japanese only Cash only



Restaurants recommended by Shizuoka Shimbun @S

どぶりハウス Donburi House

This restaurant is situated right in front of Mochimune Port, known for its shirasu (whitebait). You can enjoy a rice bowl topped with fresh-caught shirasu, as well as shopping at the market nearby.

COUPON

Complimentary extra shirasu for guests who order the Kamaage Shirasu Rice Bowl.

2-18-1 Mochimune, Suruga-ku, Shizuoka City

MAP-17

054-256-6077

11:00 ~ 14:00

Rainy days, Thu between January 16th and March 20th

Japanese only Cash only



E-1 Bldg 1F, 2-5-3 Gofuku-cho, Aoi-ku, Shizuoka City

MAP-18 P47 B-3

054-252-8232 11:00 ~ 21:00

Mon Japanese only

Cash only

ごはん屋 さくら

Gohanya Sakura

1027-8 Yuiimajuku, Shimizu-ku, Shizuoka City

MAP-19 P50

054-376-0101

11:00 ~ 16:00 (L.O.)

Sat, Sun, and holidays

10:30 ~ 19:00 (L.O.)

Tue Japanese only

Cash only



Enjoy sakura shrimp from Suruga Bay, the only place in Japan where they can be caught. Taste their natural sweetness whether raw, boiled or deep-fried with other ingredients. (Shizuoka Tenkomori-don, ¥1130)

COUPON

Complimentary fried kurohanpen (fish cake). *Only valid with purchase of meal.



河岸の市 魚市場食堂 Kashinoichi Uoichiba-shokudo

We recommend the famous "Zuke Maguro Ippai-don (marinated raw tuna rice bowl)", where the staff will keep adding tuna over your rice until you tell them to stop! Availability is limited to 30 bowls on weekdays and 80 on weekends.

COUPON

One complimentary drink or dish. *Good for up to 4 people per group. *Complimentary item selected by the restaurant. *Only valid with purchase of meal.

Kashinoichi Magurokan 2F, 149 Shimazaki-cho, Shimizu-ku, Shizuoka City

MAP-20 P50 A-2

054-351-7113

10:30 ~ 16:00

Sat, Sun, and holidays 10:00 ~ 16:00

Wed Japanese only Cash only





The Top 3 as Voted by Shizuoka Locals!

Presented by Shizuoka Shimbun @S

入船鮓 葵タワー店

Irifune-zushi

Located on B1F of Aoi Tower in front of JR Shizuoka Sta. This place offers great, reasonably-priced sushi and other dishes featuring local ingredients and seafood from Suruga Bay.

(Aoi Set (sushi with clear soup, dessert, salad, and chawanmushi savory egg custard) ¥3024)

COUPON

Complimentary green tea ice cream for those who spend more than ¥1,000 (tax-exclusive) per person. *Not valid on the purchase of lunch menu items. *Good for up to 4 people per group.

Aoi Tower B1F, 17-1 Koya-machi,
Aoi-ku, Shizuoka City **MAP-21 P48 C-5**

☎ 054-251-9178 🕒 11:00 ~ 22:00

🗒 Open every day
*Except December 31st and January 1st

🇯🇵 Japanese only

💳 VISA, DC, Master, AMEX, JCB, CUP



Conveyor belt sushi restaurants recommended by Shizuoka Shimbun @S

沼津魚がし鮓 流れ鮓 静岡パルシェ店

Numazu Uogashi-zushi Nagare-zushi

Enjoy fish landed at Numazu Port on the morning of your meal, such as original sushi items prepared in unique ways and dishes using local seafood.



JR Shizuoka Sta. PARCHE 1F, 49 Kurogane-cho,
Aoi-ku, Shizuoka City

MAP-22 P48 E-5

☎ 054-251-6116 🕒 11:00 ~ 22:00

🗒 Open every day
(Closed on days when PARCHE is closed)

🇬🇧 English

💳 VISA, DC, Master, AMEX, JCB, CUP

栄寿司

Sakae-zushi

A friendly sushi chef welcomes you when you come to this restaurant. We recommend the popular "Ichiban Nigiri." You can enjoy the true taste of Shimizu in the tuna and other local fish of the day. (High-end large serving of sushi, ¥1900)

COUPON

One complimentary soft drink. *Only valid with purchase of meal.

1-4-52 Muramatsu, Shimizu-ku,
Shizuoka City

MAP-23 P50 A-4

☎ 054-335-4015

🕒 11:30 ~ 14:00 16:00 ~ 23:00

🗒 Wed (open on holidays)

🇯🇵 Japanese only 💳 Cash only



八千代寿し鐵

Yachiyo Sushi-tetsu

63-4 Yachiyo-cho, Aoi-ku,
Shizuoka City

MAP-24

☎ 054-255-5511

🕒 11:00 ~ 14:00 16:30 ~ 22:00

🗒 Wed 🇯🇵 Japanese only

💳 VISA, DC, Master, AMEX, JCB



Enjoy sushi and a la carte dishes using fresh seafood, along with carefully selected local sake and shochu. This restaurant offers authentic sushi showcasing the true skill of its sushi chef. (Suruga Nigiri, ¥2376)

COUPON

One complimentary glass of beer or soft drink. *Good for up to 5 people per group. *Only valid with purchase of meal.



スシロー 東静岡店 Sushihiro

A tasty and affordable conveyor belt sushi restaurant. In addition to fresh fish, they also serve original sushi with meat toppings.



1008-1 Naganuma, Aoi-ku, Shizuoka City

MAP-25 P49 B-3

☎ 054-267-6116

🕒 11:00 ~ 23:00 (L.O. 22:30)

Sat, Sun, and holidays 10:30 ~ 23:00 (L.O. 22:30)

🗒 Open every day

🇬🇧 English, Chinese (Simplified)

💳 VISA, Master





**The Top 3 as Voted
by Shizuoka Locals!**

Presented by Shizuoka Shimbun @S

水塩土菜 Suiendosai

Made with carefully-selected meat, specially-ordered panko bread crumbs, and originally-blended oil. Enjoy the best tonkatsu prepared by skilled, spirited chefs.
(Fillet Cutlet Set Meal ¥2600)

+ COUPON

Complimentary ice cream for dessert. *Good for up to 4 people per group. *Only valid with purchase of meal.

6-22 Aoi-cho, Aoi-ku, Shizuoka City

MAP-26

☎ 054-246-4884

🕒 11:30 ~ 15:00 (L.O.)

17:00 ~ 20:30 (L.O.)

Sat, Sun, and holidays

11:30 ~ 20:30 (L.O.)

☑ Open every day *except year-end and New Year holidays, summer vacation, etc.

🍷 Japanese only

💳 VISA, DC, Master, AMEX, JCB, CUP



とんかつ&洋食 オリーブキッチン 和 (KAZU)

Tonkatsu & Yosyoku Olive Kitchen KAZU

The meat for the tonkatsu is carefully selected though tastings with the butcher. It is deep fried in olive oil for a crispy, healthy tonkatsu. (Tonkatsu set meal (200g), ¥1512)

+ COUPON

¥100 gelato (regular price: ¥162).

*Good for an entire group.

*Not valid in the morning. *Only valid with purchase of meal.



2-27-33 Senagawa, Aoi-ku, Shizuoka City

MAP-28 P49 B-1

☎ 054-262-7010

🕒 11:00 ~ 15:00 (L.O.) 17:00 ~ 21:30 (L.O.)

☑ No scheduled holidays 🍷 Japanese only

💳 VISA, DC, Master, AMEX, JCB



とんかつうんの Tonkatsu Unno

The breeding is crispy and the meat is tender and juicy. Enjoy the kind of tonkatsu you can only get at a specialty restaurant, where ingredients are carefully selected and dishes are made with great care. (Premium Tonkatsu Meal, ¥1350)



2-1-10 Takamatsu, Suruga-ku, Shizuoka City

MAP-29

☎ 054-237-4518 ☑ Open every day

🕒 11:00 ~ 14:00 17:00 ~ 21:00

(L.O.20:30) Opens at 16:30 on Sun and Holiday evenings

🍷 Japanese only 💳 Cash only

+ COUPON

Complimentary green tea ice cream. *Only valid with purchase of meal.

Restaurants recommended by Shizuoka Shimbun @S

金とき 池田店 Kintoki

This restaurant features meat dishes such as steak and tonkatsu. "Kintoki Cutlet Rice" is a superb, satisfying dish with a crispy texture.

+ COUPON

One complimentary soft drink. *Only valid with purchase of meal.

86-4 Hijiri Isshiki, Suruga-ku, Shizuoka City

MAP-27 P49 B-4

☎ 054-270-8636

🕒 11:00 ~ 14:30 (L.O.) 17:00 ~ 21:00 (L.O.)

☑ Thu

🍷 Japanese only

💳 VISA, DC, Master, AMEX, JCB, CUP



五郎十 Goroju

This restaurant is known for its extra large pork loin cutlet (600g). The cutlet, which is slow fried for 30 mins using only the finest lard, makes the breading crispy and the inside juicy.



943-7 Miho, Shimizu-ku, Shizuoka City

MAP-30 P50 B-3

☎ 054-335-4966

🕒 11:00 ~ 14:00 17:00 ~ 20:00

☑ Mon

🍷 Japanese only

💳 Cash only





Grilled meat MEAT 焼肉 AT

The Top 3 as Voted by Shizuoka Locals!

Presented by Shizuoka Shimbun @S

大王膳 池田店 Daiozen

Staff members will cheerfully greet you when you enter! High grade meats, such as black wagyu beef, are available at reasonable prices. Great side menu items are also available, such as the soup nabe dish. (Daiozen set, ¥5054)

611-1 Ikeda, Suruga-ku, Shizuoka City

MAP-31 P49 B-4

054-262-1022

17:30 ~ 23:30 (L.O.23:00)

Mon, the year-end and New Year holidays
Japanese only Cash only



Restaurants recommended by Shizuoka Shimbun @S

駿府の肉処 静岡そだち Sumpu no Nikudokoro Shizuoka Sodachi

This restaurant offers locally-raised meat brands, such as "Special-grade Wagyu Shizuoka Sodachi" and "Kinton-o." These cattle are raised under the warm sun with spring water from Mount Fuji to become the pride of the Shizuoka.

MRK Ote-machi 2F, 2-15 Ote-machi, Aoi-ku, Shizuoka City

MAP-35 P48 C-3

054-251-4129

11:30 ~ 14:00 (L.O.13:30)
17:00 ~ 23:00 (L.O.22:00)

The 3rd Wed of the month
Japanese only
VISA, DC, Master, AMEX, JCB



焼肉處 十々 Yakiniku-dokoro Ju-ju

Domestic meats are purchased fresh every day. This restaurant is so widely known for its tasty yakiniku grilled meat that some people travel long distances just to enjoy it. (Premium beef loin ¥3240)

COUPON

One complimentary dessert item. *Only valid with purchase of meal.

2-3-11 Ryogae-cho, Aoi-ku, Shizuoka City

MAP-33

054-251-3626 P47 B-4

17:00 ~ 27:00 (L.O.26:30)

No scheduled holidays

Japanese only

VISA, DC, Master, AMEX, JCB



焼肉食堂 (卸) 静岡食肉センター

Yakiniku-shokudo
Shizuoka-shokuniku Center

Enjoy high-quality, super fresh meat and offal, purchased first thing every morning. Many people learn how delicious offal can be when they eat at this restaurant, which offers the ultimate in freshness.

122 Shimojima, Suruga-ku, Shizuoka City

MAP-34

054-266-6644

11:30 ~ 14:30 (L.O.13:30)
18:00 ~ 23:00 (L.O.22:00)
Sat, Sun, and holidays
17:00 ~ 22:00 (L.O.21:00)

Open every day Japanese only

VISA, DC, Master, AMEX, JCB



There are many more great restaurants in shizuoka!

We recommend the restaurants given high ratings by locals in the "King of Shizuoka" contest!

Check here for details (Japanese version only)
<http://www.at-s.com/gourmet/featured/kingof2015/>

shizuoka omachi

Word-of-mouth Selection

People in Shizuoka call the central district of Shizuoka City "omachi"!

Check out the great food recommended by locals!!

STEAK DINER ARIYOSHI

Standing restaurants are quite trendy these days, and this steakhouse is the most popular of its kind in Shizuoka. You can enjoy high-quality ribeye steaks from the USA at affordable prices.

ism Tenma 1F, 19-7 Tenma-cho, Aoi-ku, Shizuoka City

MAP-36 P48 E-3

070-5336-1039

11:00 ~ 15:00 17:00 ~ 21:00

No scheduled holidays

Japanese only Cash only



Sobisuke

石臼挽手打式蕎麦舗 ソビスケ

If you want to have fun and eat soba, look no further than this restaurant!

You can get a discount if you call soba "sobi" and wear a "chonmage" samurai wig. *Groups of up to 4 people can be accommodated.

COUPON

¥50 discount. *Called "Magewari" / Only valid if you can put up with wearing a "Chonmage" samurai wig on your head from the time you order until you leave the restaurant.



Maruyoshi Bldg 1F, 10-12 Showa-cho, Aoi-ku, Shizuoka City

MAP-37 P47 B-6

090-3555-0028

18:00 ~ 26:30 (L.O. 26:00)

*Closed once soba is sold out.

Thu (Closed Fri if Thu falls on a holiday), the 3rd Wed of the month

Japanese only Cash only



Yakitori Sakaba Yachiyo

焼とり 酒場 八千代

Experience Japanese culture at this pub, known for its yakitori. You can also enjoy other favorites, such as deep fried food, oden (stewed meat and vegetables), and chicken wings.

COUPON

One complimentary drink. *Only valid with purchase of meal.



2-2-17 Gofuku-cho, Aoi-ku, Shizuoka City

MAP-38 P47 B-3

054-252-0678

17:00 ~ 22:00 (L.O. 21:00)

Sun, holidays

Japanese only Cash only

Aoba-yokocho Mikawayaya

青葉横丁 三河屋

A popular restaurant in Shizuoka's "oden alley," Aoba Yokocho. Shizuoka oden is the city's soul food. Deep fried and charbroiled items are also popular. You can enjoy a homey atmosphere here, as well.

COUPON

One complimentary Shizuoka Cha Wari (shochu mixed with cold or hot green tea) for guests who spend more than ¥2500 per person.



Aoba Yokocho, 1-8-7 Tokiwa-cho, Aoi-ku, Shizuoka City

MAP-39 P47 B-4

054-253-3836 17:00 ~ 22:00

Sun, and two Mon per month *Please check with us if you plan to come on a Monday.

Japanese only Cash only



Special feature



Gashoan

雅正庵 千代田本店

A café operated by a tea wholesaler. Japanese and Western-style dessert items made with tea are popular. You can also enjoy pasta dishes made with matcha green tea powder.

COUPON

¥200 off pasta lunch set



7-1-47 Chiyoda, Aoi-ku, Shizuoka City

MAP-40 P49 A-2

054-267-3008

11:00 ~ 16:00 (L.O.) *Open until 15:00 for lunch

Open every day *Except January 1st

Japanese only VISA, DC, Master, AMEX, JCB

shizuoka omachi

Lunchtime selection Restaurant

I'm so hungry!
I'm gonna
stuff myself!



Kiyomi-soba Honten

清見そば本店

A 2-minute walk from JR Shizuoka Sta. south exit. A homemade soba shop that is quick, affordable and delicious. The unique ramen made by this soba shop is especially popular.



COUPON
Complimentary candy

1-6 Minami-cho, Suruga-ku, Shizuoka City

MAP-41 P48 D-7

054-285-0649

10:45 ~ 14:30 (L.O. 14:20)
16:30 ~ 19:30 (L.O. 19:20)

Thu, the 2nd Sun of the month

Japanese only Cash only

Restaurant Aoki

レストラン Aoki

A popular restaurant in Shizuoka featuring classic Western-style menu items loved by men and women of all ages, such as omurice (Japanese-style rice omelet) and hamburger steak.



COUPON
One complimentary soft drink. *Only valid during dinner hours. *Only valid with purchase of meal.



1-27 Izumi-cho, Suruga-ku, Shizuoka City

MAP-42 P47 C-7

054-285-0733

11:30 ~ 14:00 (L.O.) 17:00 ~ 22:00 (L.O.)
Mon

Japanese only

Cash only



Restaurant Sanshotei

れすとらんさんしょうてい

Opened as a complement to a well-established restaurant known for its sukiyaki. You can enjoy the tastes of upscale Japanese cuisine, such as sukiyaki and a beef yakiniku rice bowl, at reasonable prices.



COUPON
One complimentary soft drink. *Only valid with purchase of meal.



Sanshotei Main Branch 1F, 2-2-2 Ryogae-cho, Aoi-ku, Shizuoka City MAP-43 P47 B-3

054-252-2136

11:00 ~ 14:00 (L.O.) 17:00 ~ 21:00 (L.O.)

Sun *If Mon is a national holiday, the restaurant will be closed on Mon and open on Sun.

Japanese only VISA, DC, Master, AMEX, JCB



Unagi no Harakawa

うなぎのはら川

The restaurant owner slices up domestic eels himself, and broils them with the restaurant's own secret sauce. In addition to kabayaki (eels grilled with sauce) and shirayaki (eels grilled without sauce), side dish items made with liver and bones are also popular.



COUPON
Complimentary dessert. *Only valid with purchase of meal.



2-6-5 Gofuku-cho, Aoi-ku, Shizuoka City

MAP-44 P47 C-3

054-254-5920

11:00 ~ 21:00 (L.O. 20:45)

Tue, the 3rd Mon or Wed of the month (once a month)

English Cash only



Special feature



Komagata Ishigaya

駒形 石ヶ谷

This restaurant is famous for its soba served in an unbelievably huge bowl. Experience it for yourself with their popular "awayuki soba." Tastes great, too!



COUPON
2 complimentary pieces of Soba-zushi. *Good for up to 10 people per group. *Only valid with purchase of meal.



2-2-7 Komagata-dori, Aoi-ku, Shizuoka City

MAP-45

054-252-3661

11:00 ~ 20:00 (L.O. 19:50)

Wed

Japanese only Cash only

shizuoka omachi

Café Selection



Kimono Cafe Chidori

きもの cafe ちどり

Japanese-style, handmade items such as bags and accessories made with kimono fabrics are available here. There is also a café space where you can relax and enjoy a cup of green tea.



COUPON
Complimentary kimono cloth piece. *Only valid with purchase of product or meal.

2-16-7 Takajo, Aoi-ku, Shizuoka City

MAP-46 P48 E-3

054-273-2266

11:00 ~ 20:00

Tue, the 3rd Wed of the month

Japanese only

VISA, DC, Master, AMEX, JCB

*Only accepted for purchases over ¥5,000.

Tezukuri cake to kocha no mise Mariasanku

手作りケーキと紅茶の店 マリアサンク

Come and relax with some tea and cake while you're out shopping. We recommend the homemade cakes made with seasonal fruit.



COUPON
One complimentary baked confection. *Only valid with purchase of meal.



Mogami Bldg 3F, 8-3 Koya-machi, Aoi-ku, Shizuoka City

MAP-47 P48 D-5

054-273-8778

11:00 ~ 19:30 (L.O. 19:00)

Mon (unless the Mon is a holiday), Tue

Japanese only Cash only

BLUE BOOKS CAFE

A new-style café where you can dine and enjoy books and music. We recommend the slow-cooked hamburger made with carefully selected ingredients.

DENBILL 1F, 4-6 Miyuki-cho, Aoi-ku, Shizuoka City

MAP-48 P48 C-4



054-260-7644

11:00 ~ 23:00 (Lunch 11:00 ~ 15:00, Tea 15:00 ~ 17:30, Dinner 17:30 ~ 23:00)

No scheduled holidays English

VISA, DC, AMEX, JCB, CUP



Wandi Short black

A coffee shop styled after those in Australia, where the drink is taken very seriously. Come here for a cup of joe made with high-quality, specialty coffee beans.



COUPON
10% off entire purchase



11-14 Shichiken-cho, Aoi-ku, Shizuoka City

MAP-49 P47 A-4

054-251-2834

11:30 ~ 21:00 (L.O. 20:30) *Lunch 11:30 ~ 14:00

No scheduled holidays

English Cash only



Special feature



Abekawa-mochi Sekibeya

安倍川餅 石部屋

Founded in 1804, this established Japanese confectioner offers Abekawa Mochi with koshian strained bean paste and kinako roasted soybean powder. The mochi is made-to-order so that you can enjoy it as fresh as possible.



COUPON
One complimentary Abekawa Mochi *Only valid with purchase of meal.



2-5-24 Miroku, Aoi-ku, Shizuoka City

MAP-50

054-252-5698

9:00 ~ 17:00 *Closed once it is sold out.

Thu *Closed Wed if Thu is a holiday.

Japanese only Cash only

shizuoka omachi

Dinner Selection & Izakaya



Taishu-sakaba Takano

大衆酒場 多可能

Founded in 1923, this izakaya has been handed down from generation to generation in the owner's family. You can enjoy typical Shizuoka side dishes, such as sakura shrimp tempura and kurohanpen fish cake.



5-4 Koya-machi, Aoi-ku, Shizuoka City

MAP-51 P47 C-5

054-251-0131

16:30 ~ 23:00 (L.O.22:30)

*May close early.

☑ Sun and holidays

☑ Japanese only ☑ Cash only

Nihonshu-sakaba Mansoya

日本酒酒場 萬惣屋〜

This izakaya has the distinction of carrying an assortment of sake from every sake brewer in Shizuoka. Enjoy your drink with fresh local fish purchased every morning from Kogawa Port in Yaizu.



Sanoharu Bldg 1F, 1-4-8 Ryogae-cho, Aoi-ku, Shizuoka City MAP-52 P47 A-2

054-253-0088

16:00 ~ 24:00

Sun and holidays 16:00 ~ 23:00

☑ Open every day

☑ Japanese only

☑ VISA, DC, Master, AMEX, JCB



Izakaya Shizuhata-hanbe

居酒屋 賤機はん兵衛 南町本店

This izakaya offers Shizuoka specialty items such as shirasu (whitebait), sakura shrimp, Shizuoka-brand pork and beef, and Kakegawa-cha (green tea), in addition to Shizuoka oden (stewed meat and vegetables).

COUPON

One complimentary plate (5 items) of Shizuoka style oden. *One plate per group. *Only valid with purchase of meal.



6-11 Minami-cho, Suruga-ku, Shizuoka City

MAP-53 P48 D-7

054-282-1600

15:00 ~ 24:00 (L.O.23:30)

☑ Open every day

☑ English, Chinese (simplified), Korean

☑ VISA, DC, Master, AMEX, JCB



Sumiyaki-oden Jissenkazen

炭焼きおでん 十千花前



We recommend the flavorful oden and charbroiled dishes of various items from both land and sea. Enjoy your meal with local sake, either at a stylish counter seat or in an elegant Japanese-style tatami room.

COUPON

One complimentary glass of the Ekinan Highball. *Only valid with purchase of meal.

3-2 Minami-cho, Suruga-ku, Shizuoka City

054-280-0888 MAP-54 P48 D-7

17:00 ~ 24:00 Sun and holidays 17:00 ~ 23:00

☑ Open every day

☑ Japanese only

☑ VISA, DC, Master, AMEX, JCB



Aoba-yokocho Odenya Obachan

青葉横丁 おでんやおばちゃん

A restaurant where you can enjoy Shizuoka's soul food: oden. The oden here boasts an irresistible flavor, light and slightly sweet. Popular items are gyusujii (beef tendon), kurohanpen (fish cake), and tonsoku (pig feet).

COUPON

One complimentary original button. *Only valid with purchase of meal.



Aoba Yokocho, 1-8-7 Tokiwa-cho, Aoi-ku, Shizuoka City

MAP-55 P47 B-5

054-221-7400

15:00 ~ 23:00 (L.O.22:30)

☑ English, Chinese (simplified and traditional), Korean

☑ Open every day ☑ Cash only



shizuoka omachi

All-You-Can-Eat Selection



Budono Oka

ぶどうの丘 新静岡セノバ店

A buffet featuring fish and local vegetables. While there are no meat offerings, the dishes are filling. You can also make an original kaisen-don (sashimi rice bowl) using your favorite fish.

Shin-Shizuoka cenova 5F, 1-1-1 Takajo, Aoi-ku, Shizuoka City

MAP-56 P48 D-3

054-266-7445

11:00 ~ 16:00 (L.O.15:00)
17:30 ~ 23:00 (L.O.21:00)

Open every day Japanese only

VISA, DC, Master, AMEX, JCB



Nihonryori Shabuzen

日本料理 しゃぶ禅 静岡店

The all-you-can-eat domestic beef shabu shabu (hot pot) is very popular here. You can also enjoy kaiseki (traditional multi-course meal) and other Japanese dishes prepared by skilled chefs at reasonable prices.

COUPON

10% off your food purchase.
*Only valid after 17:00



YS Shizuoka Gofuku-cho Bldg 2F, 1-3-14 Gofuku-cho, Aoi-ku, Shizuoka City

MAP-57 P47 A-2

054-272-6040

11:30 ~ 14:30 (L.O.13:30)
17:00 ~ 22:30 (L.O.21:30)

Open every day Japanese only

VISA, AMEX, JCB



Sweets Paradise

スイーツパラダイス 静岡パルコ店

All-you-can-eat delicious sweets, with more than 30 different kinds available at all times! Light meals such as pasta, curry and salad are also all-you-can-eat, and soft drinks are bottomless.

Shizuoka PARCO 7F, 6-7 Koya-machi, Aoi-ku, Shizuoka City



MAP-58 P48 C-5

054-903-8861

11:00 ~ 22:00 (Last entry 20:50)

Open every day Japanese only

VISA, DC, AMEX, JCB



Honkon Yamucha Shuka Little Dragon

香港飲茶酒家 リトルドラゴン

With the "Order Buffet," you can enjoy 3 hours of all-you-can-eat, freshly-prepared Chinese dishes. Select the dishes that you like from 80 different menu items, and specify your portion size.

COUPON

One complimentary drink from the Order Buffet menu for guests who purchase the Order Buffet. *Good for groups of up to 8 people.



Nishimura Bldg 1F, 2-7-9 Ryogae-cho, Aoi-ku, Shizuoka City

MAP-59 P47 B-4

054-273-7250 17:30 ~ 24:00 (L.O.23:00)

Wed Japanese only

VISA, DC, JCB



Special feature



Umibe no Buffet Hatoba Kitchen

海辺のビュッフェ はとばキッチン

More than 50 different kinds of dishes made with local vegetables are available. This restaurant is very popular among locals. Enjoy delicious Japanese dishes such as tempura, noodles and sweets.

COUPON

5% off entire purchase.



S-Pulse Dream Plaza, 13-15 Irifune-cho, Shimizu-ku, Shizuoka City

MAP-60 P50 A-3

054-354-3370

11:00 ~ 16:00 17:30 ~ 21:00

Open every day Japanese only

VISA, DC, Master, AMEX, JCB, CUP

1 Fun eraser: ¥378



2 Japanese-patterned soap, decorated with images that won't disappear: ¥648



3 Mt. Fuji origami paper : ¥324



Selection
Shizuoka folk
crafts are also
available!



4 Shizuoka Anesama bookmark: ¥216 each



5 Mt. Fuji Shizuoka green tea (Fujio), Shizuoka black tea (Fujiko): ¥389 each

オオISHI文具店 Oishi Stationery Store 1 3

MAP-61 P47 C-4

3-4 Koya-machi, Aoi-ku, Shizuoka City ☎ 054-252-0512

🕒 9:30 ~ 20:00 ☑ Open every day *Except January 1st ☑ Cash only

🎫 COUPON One complimentary original postcard with purchase.

駿府楽市 Sumpu Rakuichi 2 4

MAP-62 P48 D-6

ASTY Shizuoka, 47 Kurogane-cho, Aoi-ku, Shizuoka City ☎ 054-251-1147

🕒 9:00 ~ 21:00 ☑ Open every day *Except January 1st

☑ VISA, DC, Master, AMEX, JCB

🎫 COUPON One complimentary Mt. Fuji postcard with purchase.

マルヒデ岩崎製茶 Maruhide Iwazaki-seicha 5

MAP-63

40-21 Kitaban-cho, Aoi-ku, Shizuoka City ☎ 054-271-1010

🕒 9:00 ~ 17:00 ☑ Cash only

☑ Sat, Sun, holidays, summer holidays, New Year holidays

🎫 COUPON One complimentary tea bag with purchase.



1 Nishiki-e decorated canister (10 tea bags): ¥800



2 Roasted tea with strawberries (20g): ¥378



3 Usuchatoh (sweet ice green tea powder) (300g): ¥500



4 Wazomekan Japanese patterned canister: ¥350 each (canister only)



竹茗堂茶店 Chikumeido Chaten 1 3

MAP-64 P47 B-4

2-4-3 Gofuku-cho, Aoi-ku, Shizuoka City ☎ 054-254-8888

🕒 10:00 ~ 19:00 ☑ Open every day *Except January 1st

☑ VISA, DC, Master, AMEX, JCB, CUP

🎫 COUPON Complimentary gift with purchase.

小山園 Koyamaen 4

MAP-65 P47 C-4

2-8-18 Gofuku-cho, Aoi-ku, Shizuoka City ☎ 054-254-2577

🕒 9:30 ~ 19:30 ☑ Open every day ☑ VISA, DC, Master, AMEX, JCB

🎫 COUPON One complimentary tea bag with purchase.

chagama 2

MAP-66 P48 E-2

Passage Takajo 1F, 2-10-7 Takajo, Aoi-ku, Shizuoka City ☎ 054-260-4775

🕒 10:00 ~ 19:00 ☑ Mon *Open if Mon is a holiday ☑ VISA, Master, AMEX

🎫 COUPON (1) 10% off sencha espresso or sencha latte. (2) Complimentary tea making experience using kyusu tea pot with purchase.

LOCAL SAKE

- 1 Garyubai Junmai Daiginjo
Namacho Genshu: ¥3,780
A sharp taste with a rich
flavor and mellow aroma.



- 2 Chumasa Daiginjo
720ml: ¥3,456
Made using the Abekawa
river's underground water.
A balanced flavor.



- 3 Shosetsu Yamakage Junetsu
Junmai Ginjo Yamadanishiki
720ml: ¥1,800
A fruity sake with a clean,
rich flavor and
sophisticated aroma.



- 4 Midori-no-Eikun
Junmai Ginjo 720ml: ¥1,620
A fruity and fresh taste
with rich flavor.



松坂屋静岡店 D&M CAVE SHIZUOKA ①

Matsuzakaya Shizuoka D&M CAVE SHIZUOKA

Matsuzakaya Shizuoka B1F,
10-2 Miyuki-cho, Aoi-ku, Shizuoka City ☎ 054-254-1111

🕒 10:00 ~ 20:00 🗳 January 1st 📱 VISA, DC, Master, AMEX, JCB, CUP

🎫 **COUPON** 5% discount special shopping coupon - Main Building 6F Duty Free
Counter/ Present your passport at the Information Desk (Main Building 1F)

静岡伊勢丹 Bon repas ②

Shizuoka Isetan Bon repas

Shizuoka Isetan B1F,
1-7 Gofuku-cho, Aoi-ku, Shizuoka City ☎ 054-251-2211

🕒 10:00 ~ 19:30 📱 VISA, DC, Master, AMEX, JCB, CUP

🗳 January 1st *One unscheduled holiday in February and August.

エスパルスドリームプラザ 篠田酒店 ③④

S-Pulse Dream Plaza Shinoda Liquor Shop

13-15 Irifune-cho, Shimizu-ku, Shizuoka City ☎ 054-353-6171

🕒 10:00 ~ 20:00 🗳 Open every day 📱 DC, Master *Only for purchases over ¥5,400.

🎫 **COUPON** 10% off admission to Chibi Maruko-chan Land. Complimentary admission to the
Shimizu Sushi Museum.*Present your receipt from the Shinoda Liquor Shop at the
facility entrance (the receipt must be for purchases made on the day of your visit).

"KAWAII" GOODS

- 1 Kewpie doll with
train station name:
¥400



- 2 Kabuki
face pack: ¥900



- 3 Manpukusen
(good luck charms design)
(Stationery: ¥594, Envelopes: ¥411)



静岡鉄道株式会社 Shizuoka Railway Co., Ltd. ①

Shizuoka Railway Shin-shizuoka Sta. Ticket Counter,
1-1-1 Takajo, Aoi-ku, Shizuoka City

*Also available at Kusanagi Sta. and Shin-shimizu Sta. ☎ 054-254-5108

🕒 9:00 ~ 17:00 🗳 Open every day 📱 Cash only

東急ハンズ 静岡店 Tokyu Hands ②

Shin-Shizuoka cenova 3F,
1-1-1 Takajo, Aoi-ku, Shizuoka City ☎ 054-266-9311

🕒 10:00 ~ 20:00 🗳 Open every day 📱 VISA, DC, Master, AMEX, JCB, CUP

静岡パルコ ロフト Shizuoka PARCO LOFT ③

Shizuoka PARCO 8F, 6-7 Koya-machi, Aoi-ku, Shizuoka City ☎ 054-272-6210

🕒 10:00 ~ 20:00 🗳 Open every day 📱 VISA, DC, Master, AMEX, JCB



1 Handy plastic bag sealer



2 Waterproof smartphone case



5 Soap-dispensing kitchen brush



6 Reusable bags



3 Yamazaki Nabisco
Oreo Bits Sandwiches
Matcha Latte flavor



7 Nail polish



4 Goldfish pouch



8 Tenugui towel

ダイソー 丸井静岡店 3 4

Daiso

Marui Shizuoka B Building 8F, 6-10 Miyuki-cho, Aoi-ku, Shizuoka City

☎ 054-205-8033

🕒 10:00 ~ 19:30 🗒 Closed once in August and once in late November.

💳 VISA, Master, JCB

セリア 静岡 109 店 1 2

Seria

SHIZUOKA109 4F, 6-1 Tenma-cho, Aoi-ku, Shizuoka City ☎ 054-272-0866

🕒 10:30 ~ 20:00 🗒 Three times a year (January, February, and August)

💵 Cash only

📍 MAP-73 P48 D-4

100 えんハウス レモン 静岡駅前店 5 7 8

100yen House Lemon

B1F, 8-1 Miyuki-cho, Aoi-ku, Shizuoka City

☎ 054-653-6700

🕒 10:00 ~ 20:00 🗒 January 1st 💳 Cash only

GOUTAS by Lemon 5 6 7 8

2-2-11 Gofuku-cho, Aoi-ku, Shizuoka City

☎ 054-205-0270

🕒 10:00 ~ 20:00 🗒 January 1st 💳 Cash only

📍 MAP-75 P48 D-5

📍 MAP-76 P47 B-3

Tour the city center - where you can find what you're looking for!

Department Store Shopping

松屋静岡店 Matsuzakaya Shizuoka

MAP-77 P48 D-5

A department store with a view of Mount Fuji! Situated in front of JR Shizuoka Sta., Matsuzakaya is connected to the station through an underground passage. A variety of items are available, such as local sake, refined tea, famous domestic and foreign-brand goods, Japanese earthenware and lacquerware, as well as popular cosmetics.

COUPON

5% discount coupon - Main Building 6F Duty Free Counter/ Present your passport at the Information Desk (Main Building 1F) (*Not valid in some sections of the store.)

10-2 Miyuki-cho, Aoi-ku, Shizuoka City

☎ 054-254-1111 📅 January 1st 🇯🇵 Chinese (simplified and traditional)

🕒 10:00 ~ 19:30 *1F and basement floors of Main Building and North Building: open until 20:00. Restaurants on the 8F of Main Building: 11:00 ~ 22:00

💳 VISA, DC, Master, AMEX, JCB, CUP (Not accepted at some stores.) DFS



静岡伊勢丹 Shizuoka Isetan

MAP-78 P47 B-3

This is one of the city's foremost department stores, offering a wide range of items such as cosmetics, jewelry, watches, women's clothing, men's clothing, children's and baby clothing, household goods, grocery items, and more. It also sells plenty of local products, including Japanese tea and confections, which are perfect for souvenirs. There are also staff members who can speak English.

1-7 Gofuku-cho, Aoi-ku, Shizuoka City

☎ 054-251-2211 📅 January 1st

*One unscheduled holiday in February and August.

🕒 10:00 ~ 19:30

*Restaurant City 11:00 ~ 21:30 (L.O. 21:00)

💳 VISA, DC, Master, AMEX, JCB, CUP DFS



静岡パルコ Shizuoka PARCO

MAP-79 P48 C-5

PARCO has about 150 shops, including ladies & men's fashion, restaurants, food, cosmetics, and household goods. Please contact stores directly to inquire whether they offer duty-free service.

6-7 Koya-machi, Aoi-ku, Shizuoka City

☎ 054-272-8111 📅 Open every day

🕒 10:00 ~ 20:00

*Hours vary by store.

💳 VISA, DC, Master, AMEX, JCB

DFS (only some areas)



SHIZUOKA 109

MAP-80 P48 D-4



In the style of SHIBUYA109, a shopping mecca for young women, SHIZUOKA109 offers a huge range of clothing for young people, as well as a UNIQLO and a 100 Yen shop.

6-1 Tenma-cho, Aoi-ku, Shizuoka City

☎ 054-251-0109 📅 Three times a year (January, February, and August)

🕒 10:30 ~ 20:00

💳 VISA, DC, Master, AMEX, JCB

DFS (only some areas)

丸井静岡店 Marui Shizuoka

MAP-81 P48 D-4

Marui carries a wide variety of products, including fashion brands, household goods, and cosmetics to brighten up your life. Duty-free procedures are handled at the Card Center located on the 1F of Building A.

COUPON

5% discount if you use a UnionPay Card. 5% discount if you use an EasyCard. 10% discount if you use a Chinatrust Card or Lotte Card.

6-10 Miyuki-cho, Aoi-ku, Shizuoka City

☎ 054-252-0101 🕒 10:00 ~ 19:30

📅 January 1st *Unscheduled holiday in August.

💳 VISA, DC, Master, AMEX, JCB, CUP DFS



新静岡セノバ Shin-Shizuoka cenova

MAP-82 P48 D-3



Popular stores for foreign tourists, such as Welcia, Nojima, and Tokyu Hands, are all here. They will gladly provide support for your duty-free shopping with a "Conversation Sheet" that lets you communicate by pointing.

COUPON

One complimentary drink with meal purchases. (Available at 5F: Numazu Uogashi Zushi, 3F: Tsukiji Gindako)

1-1-1 Takajo, Aoi-ku, Shizuoka City

☎ 054-266-7500 📅 Open every day

🇯🇵 English, Chinese (simplified and traditional), Korean

🕒 Restaurants (5F): 11:00 ~ 23:00, Aboveground

🕒 floors: 10:00 ~ 20:00, B1F: 10:00 ~ 21:00

💳 VISA, DC, Master, AMEX, JCB, CUP

DFS (only some areas)

DFS = Duty Free Shop

Duty-Free Procedures

When foreign travelers shop at a duty free shop, they are exempt from paying sales tax on their purchases.



Most duty-free shops display this logo.



Japan.
Tax-free
Shop

Sales Tax Exemption —Price Ranges—

The minimum value of a purchase eligible for tax exemption is ¥5,001 for consumable goods, and ¥10,001 for general goods (Total value of purchase in the same shop on the same day. The values of consumable and general goods cannot be combined). The maximum value of a consumable goods purchase eligible for tax exemption is ¥500,000, while there is no maximum for general goods valued over ¥10,001. Consumable goods must have sealed packaging.

■ Consumable goods: from ¥5,001 to ¥500,000

* Consumable goods valued at more than ¥500,000 are not tax-exempt.

■ General goods: ¥10,001 or more, no maximum

Procedure



In-store Procedure

Don't forget your passport!



1 Present your passport at the duty-free shop when making a purchase.

2 The duty-free shop will fill out the purchase record form for you.

3 Sign the purchaser pledge, and submit it to the duty-free shop.

4 The duty-free shop will affix the purchase record form to your passport (stamped at the edges).

5 They will give you your duty-free items.



Airport Customs Procedure

6 Present your purchase record form to customs when leaving the country

7 Take your duty-free purchases out of the country



You can communicate without speaking Japanese!

Please point to what you want to say



Do you have ○○?

○○はありますか？

Please clear the table.

テーブルを片づけてください。

I'll have the same dish as that person has.

あの人が食べているのと同じものをください。

I can't eat ○○.

○○は食べられません。

We are still waiting for our order.

料理がまだ来ていません。

It's hot in here.

店内が暑いです。

Beef

牛

Pork

豚

Chicken

鶏

Peanuts

ピーナツ

Milk

牛乳

Egg

卵

Seasonings

Salt

塩

Sugar

砂糖

Pepper

コショウ

Tabasco sauce

タバスコ

Mustard

マスタード

Miso

味噌



YES

はい

Tasty

おいしい

Refill

おかわり



NO

いいえ

Extra Charge

有料

Free

無料

How much is it?

値段はいくらですか？

I would like to order again.

追加で注文したいです。

Where is the restroom?

トイレはどこですか？

Check, please.

お勘定をお願いします。

Receipt, please.

領収書をください。

It's cold in here.

店内が寒いです。

Fish

魚

Raw food

生もの

Alcohol

アルコール

Flour

小麦粉

Soybeans

大豆

Shellfish

貝類

Seasonings

Vinegar

酢

Worcestershire sauce

ウスターソース

Ketchup

ケチャップ

Mayonnaise

マヨネーズ

Soy sauce

醤油(しょうゆ)

Wasabi
(Japanese horseradish)

わさび

Discount passes for visiting sightseeing spots
in Shizuoka City

1-day Unlimited Train/Bus Pass

If you want to visit sightseeing spots like the World Cultural Heritage Site Miho-no-Matsubara or National Treasure Kunoan Toshogu Shrine or Nihondaira, use the unlimited pass to ride trains and buses as much as you want, all day long!

Fares Adults: ¥1,200 Children: ¥600

* For buses, it can be used for trips with fares less than ¥600 one way on routes starting from Shizuoka Sta., Higashi-Shizuoka Sta., Kusanagi Sta., and Shimizu Sta. For trains, it can be used to ride all lines.

Ticket Counters



しずてつジャストライン Shizutetsu Justline Bus

Shin-Shizuoka Bus Information Desk **MAP-83 P48 D-3**

Shizuoka Ekimae Bus Information Desk **MAP-84 P48 D-5**

Shimizu Ekimae Bus Information Desk **MAP-85 P50 A-1**

<Contact Information>

Shizutetsu Justline Shin-Shizuoka Bus Information Desk 054-252-0505



静岡鉄道 Shizuoka Railway

Shin-Shizuoka Sta. **MAP-86 P48 D-3** Shin-Shimizu Sta. **MAP-87 P50 A-2**

<Contact Information> Shizuoka Railway Railway Office 054-261-6981



Drive around Shizuoka City
in a rental car!

Rent-A-Car

The mountainous part of Shizuoka City has many soothing spots like hot springs and waterfalls. If you want to tour the sightseeing spots quickly and efficiently, we recommend renting a car. Here are some rent-a-car shops you can walk to from JR Shizuoka Sta.!

Visit the mountains
and the beach!



ニッポンレンタカー 静岡駅南口営業所

NIPPON Rent-A-Car

2-1-32 Inagawa, Suruga-ku, Shizuoka City **MAP-88**

☎ 054-286-2250 🕒 Open 24 Hours 🗓 Open 365 Days

¥ Subcompact: from ¥6,912/12 hours

🗺 English 📄 VISA, DC, AMEX, JCB



日産レンタカー 静岡新幹線口店

Nissan Rent-A-Car **MAP-89 P48 E-7**

13-8 Minami-cho, Suruga-ku, Shizuoka City

☎ 054-283-4123 🕒 7:00 ~ 22:00 🗓 Open 365 Days

¥ Subcompact: ¥5,076/12 hours

🗺 English 📄 VISA, DC, Master, AMEX, JCB, CUP



トヨタレンタリース静岡 静岡新幹線口店

TOYOTA Rent-A-Lease **MAP-90 P48 E-7**

11-6 Minami-cho, Suruga-ku, Shizuoka City

☎ 054-286-0100 🕒 8:00 ~ 20:00 🗓 Open 365 Days

¥ From ¥5,000/6 hours (varies by model)

🗺 English, Chinese (Simplified, Traditional), Korean

📄 VISA, DC, Master, AMEX, JCB



オリックスレンタカー 静岡駅前店

Orix Rent-A-Car **MAP-91 P48 E-5**

11-10 Miyuki-cho, Aoi-ku, Shizuoka City

☎ 054-254-0543 🕒 8:00 ~ 20:00 🗓 Open 365 Days

¥ From ¥4,860/6 hours 🗺 English, Korean

📄 VISA, DC, Master, AMEX, JCB



Bicycle Rental Services Near Hotels

Rent-A-Cycle

Why not experience the city atmosphere and see the sights by bicycle? Shizuoka City is mostly flat, so it feels great to take in the view of Mount Fuji from a bicycle!

Look for this logo



[Fee] ¥500 per use

[Usage Time] Depends on rental facility

* Please present your ID, etc.

*You can check rental locations at the link below (Japanese only)

<http://www.city.shizuoka.jp/000691657.pdf>

Handy Travel Information



I want travel info about sightseeing spots, hotels, and transportation!

Information Center for Foreign Tourists (Shizuoka General Tourist Information Center)

The General Tourist Information Center is conveniently located near the JR Shizuoka Sta. North Exit. They can help you in English.

49-1 Kurogane-cho, Aoi-ku, Shizuoka City
(JR Shizuoka Sta. North Exit)

☎ 054-253-1170 🕒 9:00 ~ 17:45
📅 12/29 ~ 1/1 🗿 English support available

📍 MAP-92 P48 D-5

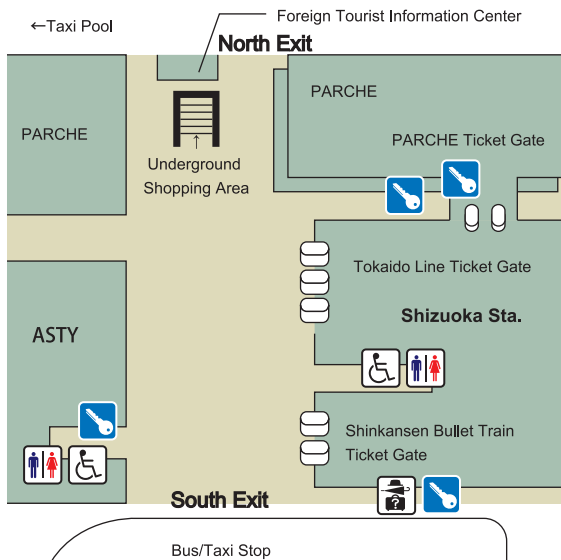


Where are there coin lockers I can use to store large bags?



JR Shizuoka Sta. Locker Locations

🔑 Lockers 🚻 Bathrooms 🗑️ Lost and Found
♿️ Wheelchair-accessible Bathrooms



I want to check out Shizuoka City tourist information on the Internet!

Tourist Information Website [Shizuoka Tourism Information, Sumpu Shizuoka City]

You can check out Shizuoka City tourism information here.

▶ <http://www.visit-shizuoka.com/en/>

The Local Newspaper's Information Site [The Shizuoka Shimbun @S]

Full of information on restaurants and events in Shizuoka Prefecture. (Only available in Japanese)

▶ <http://www.at-s.com/>



I feel sick!
Where should I go?!



Shizuoka General Hospital

4-27-1 Kita-ando, Aoi-ku, Shizuoka City

☎ 054-247-6111 🗿 English support available

By Taxi / About 15 minutes from JR Shizuoka Sta.
By Bus / About 25 minutes from JR Shizuoka Sta.

📍 MAP-93



I want to get advice by phone before I go to the hospital!
Is there a consultation service that speaks my language?

AMDA International Medical Information Center

This non-profit organization provides information on healthcare facilities and telephone interpretation support during examinations in 8 languages. After asking what kind of insurance you have and medications you are prescribed, they will provide information on healthcare facilities nationwide.

Tokyo Center ☎ 03-5285-8088

English, Spanish, Chinese Korean, Thai	9:00 ~ 20:00 (Every Day)
Portuguese	9:00 ~ 17:00 (Mon, Wed, Fri)
Tagalog	13:00 ~ 17:00 (Wed)

